

End of Year Report


Wilder Ouse

2024-2025



Ernest Kleinwort
Charitable Trust



Lewes District Council



Wilder Ouse is a **partnership project** working across the Ouse River catchment to deliver **Nature-based solutions** and create a **Nature Recovery Network**.

Our small team of experts work with **communities and landowners** to help people and wildlife by **restoring ecological connectivity, ecosystem function** and **building climate resilience**.

The project is hosted by Sussex Wildlife Trust, and supported by the Ouse and Adur Rivers Trust, the Woodland Trust, the Environment Agency, Lewes District Council and Wealden Council.

Progress Reporting

Habitat Delivery

Tree Planting

4,360

Trees Planted

[CLICK HERE](#)

Including a partnership project with [Forests Without Frontiers](#)



353m

Native Hedging

Wetland Habitat Creation

2

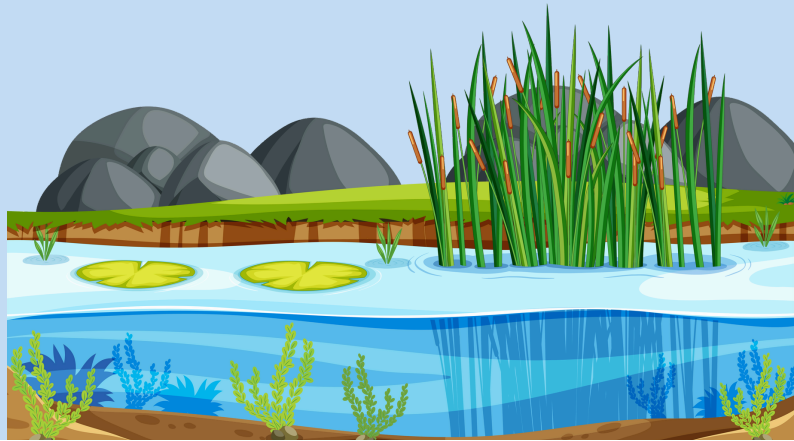
Dead wood pond habitats installed

7

Seasonal Scrapes

9

Ponds created or restored



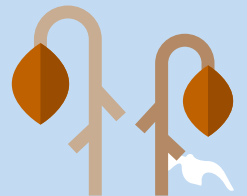
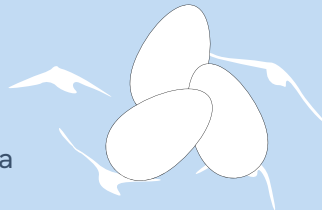
Niche Habitat Restoration

2

Hibernacula Created

15m

Dead Hedge Habitat



Climate Resilience & Nature-based Solutions

Natural Regeneration of Trees and Shrub

2 Ha

Land assigned to naturally regenerate



1.2 Tonnes

of Carbon stored Per Year Through New Regeneration
Once The Trees Reach 5+ y/o

Carbon Sequestration

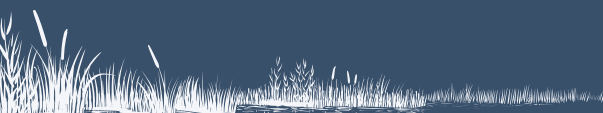
343

Tonnes of Carbon Per Annum Through Wetland Creation



247.1

Kilograms of Carbon Per Year Through Hedgerow Planting



Catchment Wide Water Storage

79



Leaky Dams
Slowing the Flow

220,000L

Immediate water storage during a large rainfall event

11,000,000L

Estimated annual water storage

51



Ponds and Scrapes
Holding back Water (2 year total)

Strategic and Catchment Scale

57

Landowners Advised

23

Landowners taking immediate action for nature's recovery

Nature Recovery Networks

23

Miles of the Weald to Waves Corridor within the Ouse Project Boundary

Click [here](#) to find out more

1

New site started work as Scrubland Superheroes

60

Follow This Link to Learn About B-Lines

Miles of Buglife B-Lines within the Ouse catchment

10

Metres of hedgerow Planted within BugLife B-Lines

0.4 ha

of meadow planted within Buglife B-Lines

6

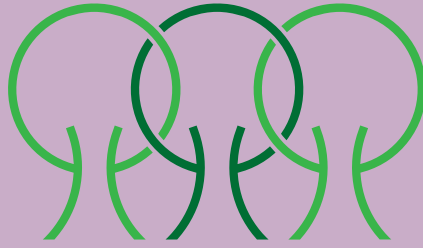
Local Wildlife Sites Positively Influenced

Connections Made Within the NRN

56



Stepping Stone Links Created



17

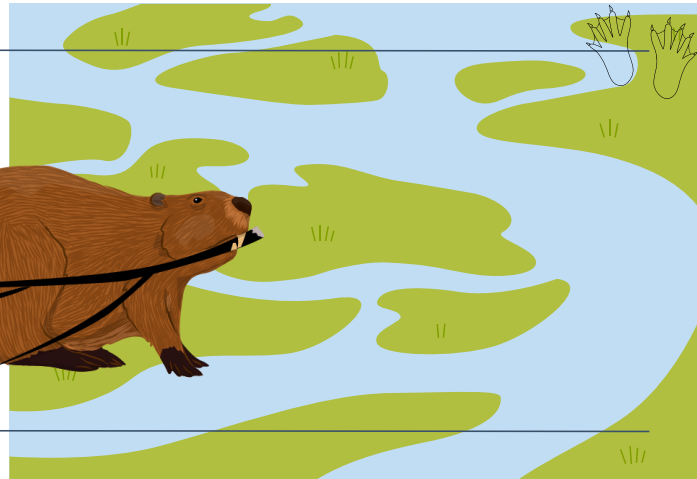


Larger Wildlife Corridors Instated

Species Recovery



Help SWT Prepare for multi-catchment free living beaver licence



Making Space for Our Native Wildlife

Invasive Species
Removed at

4

Sites



Inspiring and Engaging the Community



Social Media and Website



Wilder Ouse
webpages and blogs

2418 Views

907 Active Users

YouTube

2137 Views

106 Hours of watch time

Socials

9.6k Facebook reach

3784 LinkedIn reach

Bluesky/X/Threads

3500 Estimated reach

Workshops and Events

5

Schools Engaged

22

Events



16

Leaky Dam Workshops



23

Community & Stakeholder groups involved with the project

Partnerships

Lost Woods leaky dam workshops





Working Collaboratively With Weald to Waves



Wealden District Council became an official partner

Volunteering



886

Hours of Volunteer Time

excluding workshops & partnership activities



To Help With Over

30

Nature recovery activities



Budget and Funding

In-Kind Contributions

£70,103.58



In-Kind SWT
Match Funding

£19,992.56



Cash Match Funding

£29,700



Core income raised by SWT



£36,857

At least

£11,500+



Additional funding sourced
by landowners



We appreciate the continued support from our project partners, volunteers and landowners - making a difference to Nature Recovery and Rewilding across the Ouse catchment. For information on projects at individual sites, see our Wilder Ouse Summary report 2024-25. Information on how we are progressing towards our 5-year targets is available on request.

Thank
you!